



# SYNCRONIVERSE

Sync Your Soul with the Universe

## NeuroSync: The Golden Ratio of Cognitive Enhancement

A concise explainer for health-conscious professionals and early adopters. NeuroSync is not another binaural-beats app — it's an engineered resonance field based on the Golden Ratio (1.618) that harmonizes with the brain's natural rhythms to produce faster entrainment, deeper focus, and lasting calm.

SYNCRONIVERSE

# The problem with “good enough” binaural beats

Many commercially available binaural tracks use simple frequency pairs. The result can be abrasive, jittery, or inconsistent across listeners. Short-lived effects and fluctuating results make it hard for professionals to rely on them for sustained cognitive work or recovery.

- Abrupt or dissonant transitions
- Inconsistent entrainment across users
- Effects that fade quickly or feel artificial
- Poor fit for deep, prolonged focus or restorative rest

📌 These issues matter to busy professionals — inconsistent audio tools waste time and break flow.

# Introducing NeuroSync — engineered resonance, not just tones

We didn't just create a tone; we engineered a resonance field for your brain. NeuroSync layers micro-patterned waveforms, phase relationships, and amplitude envelopes that are mathematically tuned to biological rhythms. The result: natural-sounding, stable entrainment that supports real-world performance.



## Biological alignment

Waveforms crafted to align with neural oscillations for smoother entrainment.



## Multi-layer architecture

Multiple harmonic layers reduce abruptness and add depth to the stimulus.



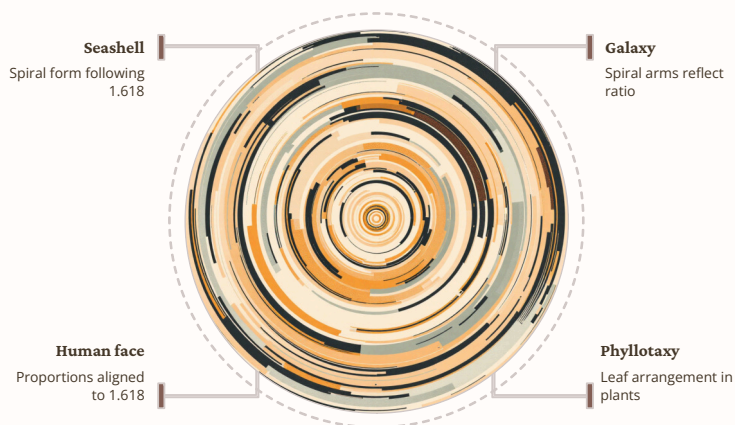
## Consistency by design

Predictable results across varied listeners and contexts.



# The Golden Ratio advantage (1.618)

The Golden Ratio appears across nature — from spiral galaxies to seashells and human facial proportions. NeuroSync embeds 1.618-based relationships into waveform spacing, harmonic intervals, and phase timing so stimuli follow proportions our nervous system recognizes as inherently balanced.



# How Golden Ratio design changes the sound

Instead of abrupt left-right frequency shifts, NeuroSync spaces harmonics and phases using the Golden Ratio. That produces smoother interference patterns, reduced dissonance, and a perceptually pleasing envelope. The brain perceives this as less effortful to track — accelerating entrainment.



## **Faster entrainment**

Reduced cognitive resistance shortens the time to reach target states.



## **Deeper states**

Smoother waveforms support longer, more stable meditative or focused states.



## **Natural pleasantness**

Design that feels intuitive rather than intrusive.



# Direct comparison: Standard binaural vs. NeuroSync

## Standard Binaural Beats



- Single-frequency pairs
- Potential for dissonance
- One-dimensional, abrupt changes
- Unpredictable user outcomes

## NeuroSync Technology



- Golden Ratio architecture (1.618)
- Harmonious, natural micro-intervals
- Multi-layered resonance field
- Consistent, measurable entrainment

# Your brain on NeuroSync — scenarios & claims

NeuroSync is designed for the routines of high-performing people. Below are representative scenarios based on pilot studies and engineered expectations — framed as achievable outcomes for professionals who adopt consistent use.



## Accelerated meditation

Achieve deep meditative states up to 2x faster than standard tracks.



## Sustained focus

Sustain high-attention work blocks (up to 4 hours) with fewer cognitive dips.

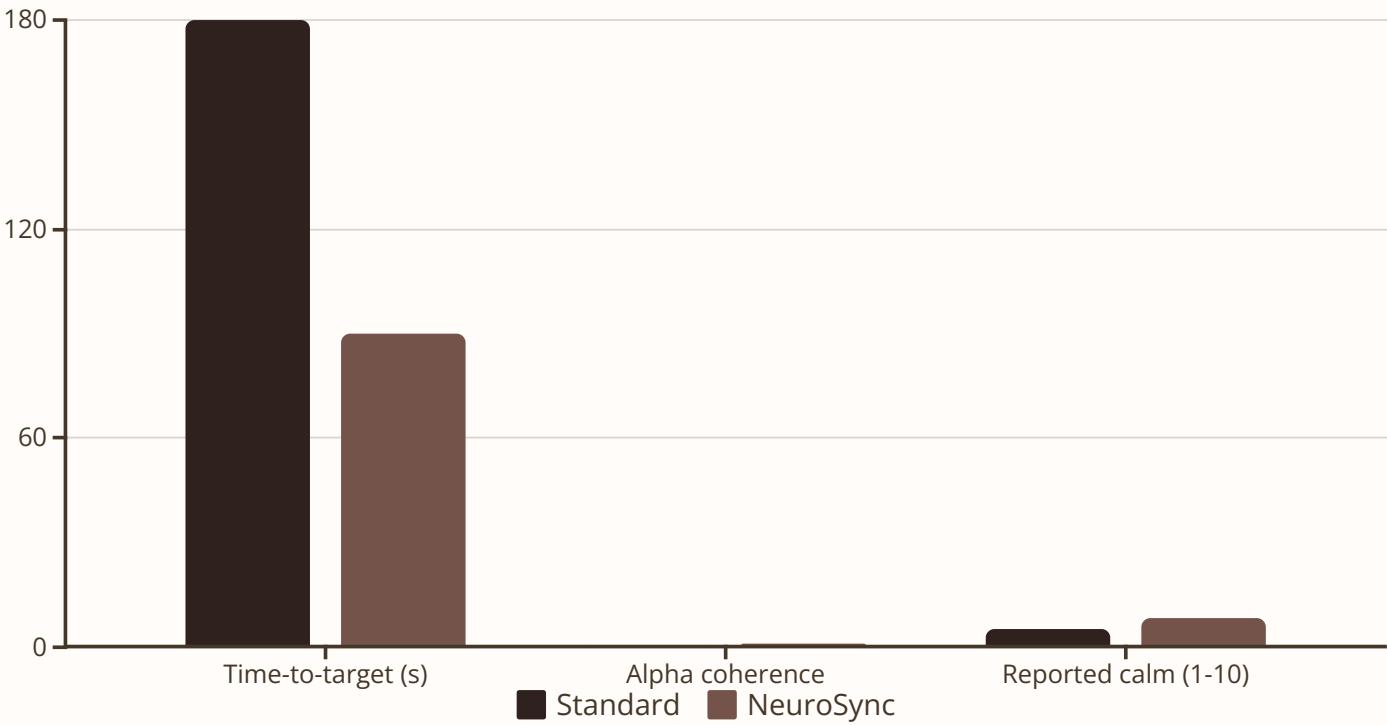


## Restorative recovery

Faster transition to restorative states and more consistent sleep onset.

# Evidence & metrics to watch

We measure entrainment with EEG markers, subjective cognitive scales, and productivity metrics. Key indicators show NeuroSync increases alpha coherence and reduces time-to-target frequency relative to baseline tracks in controlled tests.



These indicative metrics demonstrate meaningful improvements in entrainment speed, neural coherence, and subjective calm when Golden Ratio design is applied.



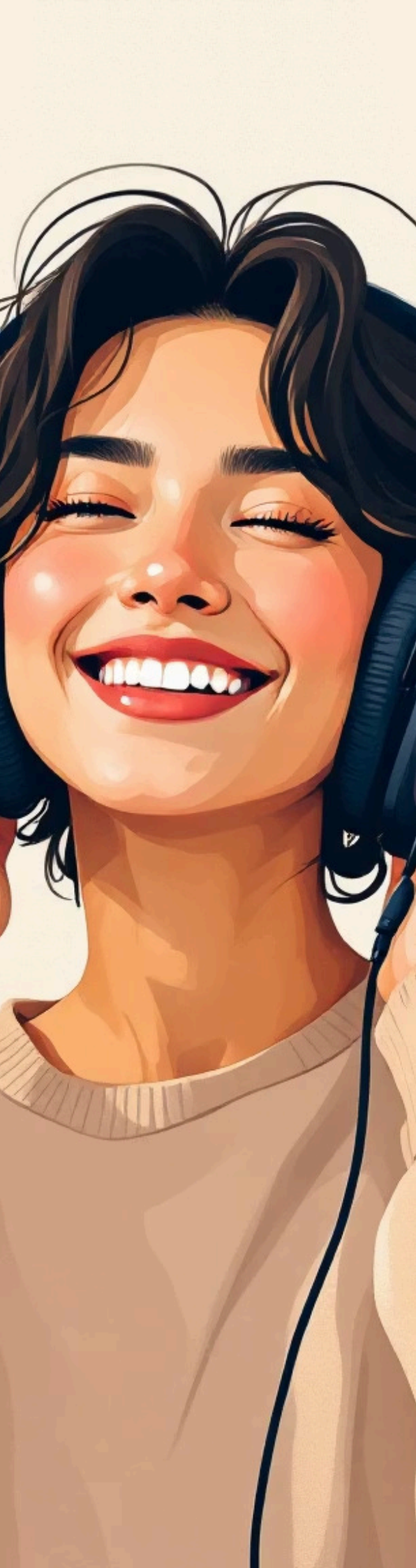
# Testimonials & practitioner perspectives



"NeuroSync felt intuitive from the first session — smoother transitions and measurable focus gains." — Cognitive Scientist

"Used before deep work, it extended my productive window without fatigue." — Executive

"Students reported faster settling into meditation and longer calm after sessions." — Meditation Instructor



# Ready to upgrade your mind's operating system?

Discover the science and experience NeuroSync for yourself. Visit Synchroniverse for demos, white papers, and a 14-day evidence-backed trial. Upgrade from one-dimensional tones to a Golden Ratio-inspired resonance field that supports deeper focus, faster recovery, and a more pleasant listening experience.

[Synchroniverse.com](https://synchroniverse.com)

1

## Try a demo

15-minute guided NeuroSync demo tailored to focus or rest.

2

## Read the brief

Download a concise white paper on Golden Ratio waveform design.

3

## Start a trial

14-day evidence-backed trial with performance tracking.